



# BluSeal AKS

## ST MARYS TREATMENT PLANT

Sydney's North-West is predicted to have an additional half a million residents by 2040. To ensure the longest possible design life of new wastewater infrastructure, Sydney Water specified products that would make the water treatment process more sustainable, cost-efficient and effective over the long-term.

### Project Details:

Project Completion: August 2019  
Client/End User: Sydney Water  
Contractor: Willcen

### Application

#### WHERE WE USED BLUSEAL AKS

BluSeal AKS was used on the internal formwork of the treatment plant. This allowed for the structural rigidity benefits of concrete to be combined with the acidic durability of a polymer liner. Despite being a polymer, BluSeal AKS performs better than concrete in abrasion and resistance tests.

#### WHY WE USED BLUSEAL AKS

BluSeal AKS has a design life exceeding 100 years, which is a highly regarded benefit as the mindset of asset owners shifts towards long-term, sustainable solutions. AKS also provided significant time savings for construction of the plant as the contractor didn't need to wait 28 days to apply a protective coating. The AKS was fixed in-place and ready for service as soon as the formwork was removed.

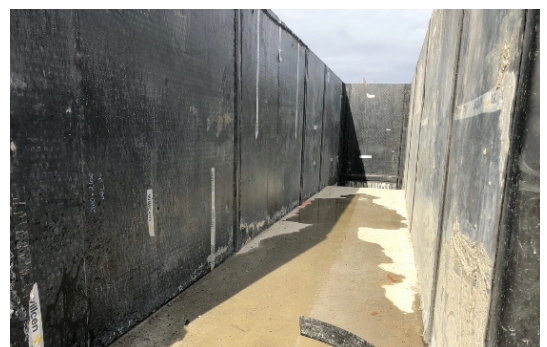
Cast from the highest quality HDPE resins, BluSeal AKS withstands corrosive environments and harsh conditions that will be present in the coming decades at the St Marys facility.

### Features and Benefits

- Resistant to chemical and mechanical impact
- Rapid installation
- Cost effective
- Time saving and reliable installation

### Summary

BluSeal AKS has many distinct advantages over epoxy-based coatings as a long-term solution. We have testing to support our claim that BluSeal AKS linings will continue to protect concrete structures for many generations to appreciate.





## Contact Bluey

### HEAD OFFICE QLD

1300 0 BLUEY | +61 7 3399 3635 | +61 428 472 976 | [qld@bluey.com.au](mailto:qld@bluey.com.au)

[www.bluey.com.au](http://www.bluey.com.au)

### NSW

1300 0 BLUEY  
+61 424 848 322  
[nsw@bluey.com.au](mailto:nsw@bluey.com.au)

### VIC

1300 0 BLUEY  
+61 407 242 990  
[vic@bluey.com.au](mailto:vic@bluey.com.au)

### SA

1300 0 BLUEY  
[sa@bluey.com.au](mailto:sa@bluey.com.au)

### WA

1300 0 BLUEY  
+61 407 242 990  
[wa@bluey.com.au](mailto:wa@bluey.com.au)

### TAS

1300 0 BLUEY  
[tas@bluey.com.au](mailto:tas@bluey.com.au)

### ACT

1300 0 BLUEY  
+61 424 848 322  
[act@bluey.com.au](mailto:act@bluey.com.au)

### NT

1300 0 BLUEY  
+61 428 472 976  
[nt@bluey.com.au](mailto:nt@bluey.com.au)

### NZ

+64 22 636 5801  
[nz@bluey.com.au](mailto:nz@bluey.com.au)

### UK/EUROPE

+353 86 035 6085  
[bluey@bluey.ie](mailto:bluey@bluey.ie)

### ASIA PACIFIC

+65 6742 4466  
+65 8588 0306  
[sales\\_sg@quicseal.com](mailto:sales_sg@quicseal.com)

